

# ELEMENTS DESIGN

---







Cleaning  
& Care

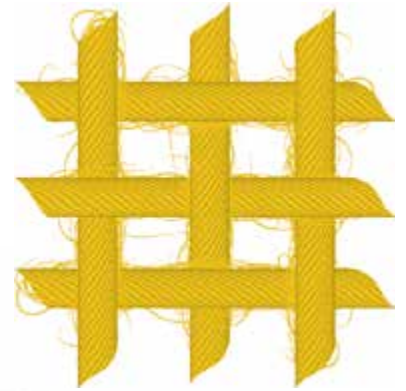


Explanation  
of symbols

# ELEMENTS

The **ELEMENTS quality** scores with its fine textile character. Textured staple fiber acrylic yarns are woven together in the warp and weft, which results in a surface with unique haptic effects. All our sun protection fabrics are covered with our special **TEXgard Easy Clean Finish** for weather protection which makes the fabrics perfect for their use outdoors.

**100%  
ACRYLIC STAPLE FIBER**



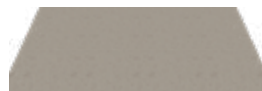
## ELEMENTS DESIGN



**320 993**  
Dubbo



**320 923**  
Seagull



**320 963**  
Stucco



**320 888**  
Flight



**320 974**  
Melbourne



**320 954**  
Portland



**320 925**  
Flint



**320 910**  
Pillar



**320 994**  
Karratha



**364 598**  
Emerald



**320 253**  
Wooden



**320 715**  
Morocca



**320 967**  
Contrails



**320 556**  
Cairns



**320 555**  
Cruise



**315 082**  
Latitude



**315 352**  
Downtown



**315 052**  
Yellow White



**315 167**  
Red White



**315 422**  
Blue White



**315 525**  
Maritime



**315 105**  
Black White



**315 404**  
Eclipse



# ELEMENTS SOLIDS



**314 919**  
Toast



**314 723**  
Sea Salt



**314 154**  
Black



**314 638**  
Pepper



**314 402**  
Meteor



**314 398**  
Charcoal



**314 085**  
Bourke



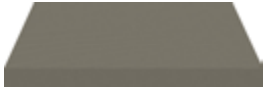
**314 840**  
Asphalt



**314 028**  
Kembla



**314 085**  
Bourke



**314 083**  
Hammersley



**314 325**  
Parchment



**314 941**  
Pewter



**314 364**  
Stawell



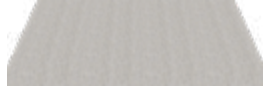
**314 010**  
White



**314 917**  
Toffee



**314 403**  
Cappuccino



**314 803**  
Satellite



**314 819**  
Stone



**314 020**  
Linen



**314 851**  
Smooth Cream



**314 070**  
Oyster



**314 814**  
Beach



**314 045**  
Daffodil



**314 003**  
Yellow



**314 763**  
Burgundy



**314 001**  
Red



**314 414**  
Ocean



**314 006**  
Regal Blue



**314 546**  
Denim



**314 525**  
Space



**314 362**  
Heritage Green



**314 624**  
Wilderness





p 1300 854 811  
 f 1300 658 889  
 fabrics@hvg.net.au  
 hvgfabrics.com.au

© 2023 Sattler SUN-TEX | HVG Brochure Elements\_2023 AUS\_1.0

## THE WORLD OF SATTLER ALWAYS WITH YOU



## THIS IS HOW IT WORKS

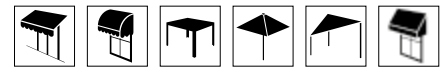
DISCOVER THIS COLLECTION  
 ALSO IN OUR **MOBILE APP!**

1. Scan QR Code.
2. Open link to the **mobile APP**.
3. Scan QR code next to the fabric with the **mobile APP**, or search the colour number.
4. See the fabric on a system, change the angle, time of day or even the direction of the sun.

## FACTS

### 314/315/320/364 ELEMENTS

Applications



	DIN 60 001	100 % PAN		DIN EN ISO 13934-1	100 daN / 5 cm
	DIN EN 12127	290 g / m <sup>2</sup>		DIN EN ISO 105-B04	● min. 7/8* ● min. 4-5/5*
	EN ISO 4920	Note: 100			120 cm
	DIN EN ISO 811	370 mm		DIN EN ISO 105-B02	● min. 7/8
	DIN ISO 9354	L 1/1		Declaration of conformity	
	DIN EN ISO 13934-1	145 daN / 5 cm		EN 13961	

\* white on request